



ZEN SOLUTIONS

ZEN OSA MONITOR is a prime component of ZEN, the William Data Systems suite of network management solutions. ZEN provides a comprehensive insight into z/OS network operations by offering targeted solutions, adapted to meet your unique business needs.

The suite consists of the ZEN Presentation Manager, a central interface that enables users to integrate and operate tools easily, and a selection of targeted solutions that provide IT performance management, network optimization, monitoring, automation, tracing, reporting and security. ZEN solutions are critical to maintaining business continuity and service levels of z/OS networks.

Monitor and manage your Open Systems Adapters

IBM's Open Systems Adapter (OSA) is an integrated communications adapter and is the strategic communications device for IBM's mainframe architecture. It has a critical role in mainframe information throughput and the optimized operation of these devices is fundamental to the well-being of the network.

ZEN OSA MONITOR

ZEN OSA MONITOR is a new, dedicated monitoring and management tool that enables you to see at a glance how your Open System's Adapter's (OSA) are performing.

ZEN OSA MONITOR, also known as ZOM, contains unique monitoring capabilities that dynamically detect any status changes or increases in error counts. All such changes are summarized in easy to read panels in the ZEN Presentation Manager and can be automatically alerted on. A simple but effective system of traffic lights highlight any changes to reference values, ensuring these critical devices are maintained at optimal performance levels.

ZEN OSA MONITOR HIGHLIGHTS

- Dynamic detection of all OSAs - Install and go!
- OSA Performance monitoring and alerting
- Clear and easy to navigate displays
- Problem determination tools - Includes simplified OSAENTA trace set-up
- Historical data for capacity planning and reporting
- Displays all OSA SNMP resource information
- Full descriptions of every value
- Supports all versions of *OSA Express*
- Fully integrated with ZEN and ZEN family of component products

UNIQUE OSA HEALTH CHECK

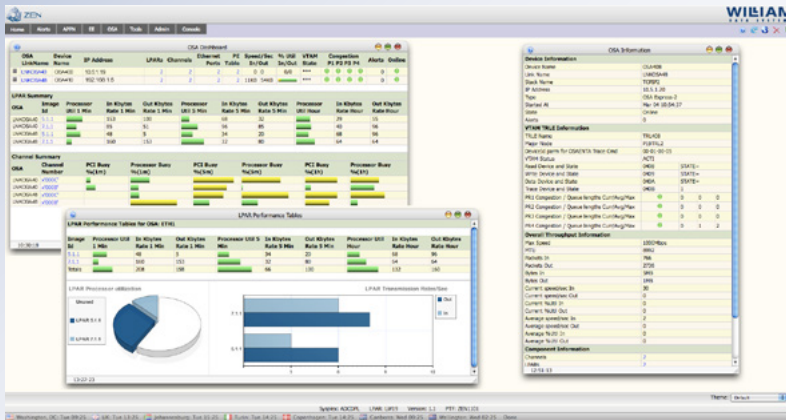
ZOM's Health Check function provides a unique way of dynamically checking whether there are any problems with your OSAs.

The Health Check, which can be run on-demand, rapidly checks every field associated with all monitored OSAs against ZOM Rules. The resulting display shows up any fields considered to be indications of faults. No faults found provides you with an assurance that no out-of-range conditions have been met.

Three different levels of checking are possible:

- Standard: changes since last Soft Reset
- Custom: Data checked against active rules
- Full: Data checked against all rules

ZEN OSA MONITOR provides detailed OSA information

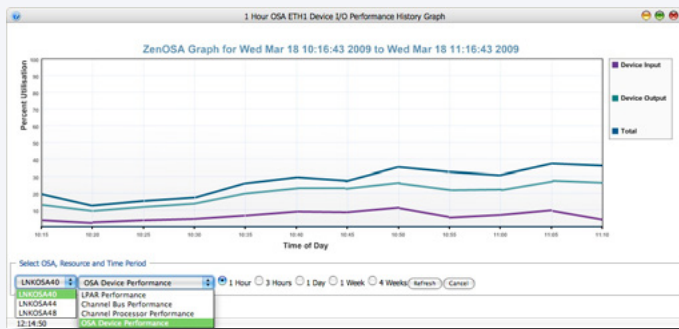


Standard Health Check: All active nodes reported against all fields changed since last health check on Tue Jan 13 07:23:00 2009.

Feature	Field	Current value	% 5 Minutes ago	Best Value	Reason	Alerts	Status
OSA LUN/SPACE	F1 Queue	Congestion	Unchanged	Unchanged	Counter Increased	0	0
	F2 Queue	Congestion	Unchanged	Unchanged	Counter Increased	0	0
	F3 Queue	Congestion	Unchanged	Unchanged	Counter Increased	0	0
	F4 Queue	Congestion	Unchanged	Unchanged	Counter Increased	0	0
	F5 Queue	Queue Depth	100	100	Threshold exceeded	0	0
	F6 Queue	Queue Depth	100	100	Threshold exceeded	0	0
	F7 Queue	Queue Depth	100	100	Threshold exceeded	0	0
	F8 Queue	Queue Depth	100	100	Threshold exceeded	0	0
	F9 Queue	Queue Depth	100	100	Threshold exceeded	0	0
	F10 Queue	Queue Depth	100	100	Threshold exceeded	0	0
	F11 Queue	Queue Depth	100	100	Threshold exceeded	0	0
	F12 Queue	Queue Depth	100	100	Threshold exceeded	0	0
OSA ETH	F1 Queue	Congestion	Unchanged	Unchanged	Counter Increased	0	0
	F2 Queue	Congestion	Unchanged	Unchanged	Counter Increased	0	0
	F3 Queue	Congestion	Unchanged	Unchanged	Counter Increased	0	0
	F4 Queue	Congestion	Unchanged	Unchanged	Counter Increased	0	0
	F5 Queue	Queue Depth	100	100	Threshold exceeded	0	0
	F6 Queue	Queue Depth	100	100	Threshold exceeded	0	0
	F7 Queue	Queue Depth	100	100	Threshold exceeded	0	0
	F8 Queue	Queue Depth	100	100	Threshold exceeded	0	0
	F9 Queue	Queue Depth	100	100	Threshold exceeded	0	0
	F10 Queue	Queue Depth	100	100	Threshold exceeded	0	0
	F11 Queue	Queue Depth	100	100	Threshold exceeded	0	0
	F12 Queue	Queue Depth	100	100	Threshold exceeded	0	0
OSA ETH	F1 Queue	Congestion	Unchanged	Unchanged	Counter Increased	0	0
	F2 Queue	Congestion	Unchanged	Unchanged	Counter Increased	0	0
	F3 Queue	Congestion	Unchanged	Unchanged	Counter Increased	0	0
	F4 Queue	Congestion	Unchanged	Unchanged	Counter Increased	0	0
	F5 Queue	Queue Depth	100	100	Threshold exceeded	0	0
	F6 Queue	Queue Depth	100	100	Threshold exceeded	0	0
	F7 Queue	Queue Depth	100	100	Threshold exceeded	0	0
	F8 Queue	Queue Depth	100	100	Threshold exceeded	0	0
	F9 Queue	Queue Depth	100	100	Threshold exceeded	0	0
	F10 Queue	Queue Depth	100	100	Threshold exceeded	0	0
	F11 Queue	Queue Depth	100	100	Threshold exceeded	0	0
	F12 Queue	Queue Depth	100	100	Threshold exceeded	0	0

Unique ZOM Health Check provides unparalleled insight into the wellbeing of your OSAs.

ZOM presents historical data in graphical or tabular form with a choice of preset periods...



SUPPORT

As confirmed by an independent survey of William Data Systems customers, we have built an exceptional reputation for outstanding customer support. We provide comprehensive, effective and highly responsive support for WDS products at all stages of their life-cycle, from initial evaluation to production implementation.

In addition, a wide range of Professional Services and training programs are available on request. These can be held at WDS offices, customer sites or managed remotely via web conferencing.

ZEN OSA MONITOR

Optimizes Network Performance

for Maximum Business Resilience



William Data Systems (WDS) is a pioneer of specialized z/OS network management solutions. Established in 1993, we are an independent global organization that provides innovative solutions to run mainframe networks efficiently and securely. ZEN, the WDS network management suite, offers a selection of user-friendly and cost-effective solutions to meet your unique needs. To overcome both business and technology challenges, WDS provides customers with licensing and pricing terms that are as flexible as our solutions.

WDS supports customers worldwide in sectors such as finance, banking and manufacturing, and our client list includes Fortune 100 companies and government agencies. WDS is an IBM Business Partner and a member of the IBM PartnerWorld for Developers program. We are committed to the global z/OS networking market and to leading the way with innovative solutions through the latest advances.



Authorized System z

To learn more about WDS ZEN solutions, for support or to contact our offices, visit www.willdata.com

IBM logo, the Business Partner emblem, z/OS, VTAM and SNA are trademarks of International Business Machines Corporation. ZEN, the ZEN logo, ZEN IP MONITOR – IMPLEX (ZIM), ZEN EE MONITOR – FERRET (ZEM), ZEN OSA MONITOR (ZOM), ZEN LINUX MONITOR (ZLM), ZEN TRACE & SOLVE – EXIGENCE (ZTS), ZEN FTP CONTROL – FTPALERT (ZFO), ZEN EE SECURITY – APIAS (ZES) and ZEN APPLICATION GATEWAY (ZAG) are trademarks of William Data Systems Ltd. All other brand and product names are trademarks or service marks of their respective holders.

Copyright © 1999-2012 William Data Systems Ltd. All rights reserved.

