



ZEN SOLUTIONS

ZEN LINUX MONITOR is a prime component of ZEN, the William Data Systems suite of network management solutions. ZEN enables a comprehensive insight into System z network operations and availability by offering targeted solutions, adapted to meet your unique business needs.

The suite consists of the ZEN browser interface and a selection of network management solutions that provide network performance and availability management, monitoring, tracing, automation, reporting and security. ZEN solutions are critical for maintaining business continuity and meeting network service level agreements.

Monitor all your Linux Servers with ZEN

The use of Linux as a production platform in enterprise datacenters continues to grow. No longer a playground for geeks and students, Linux has the backing of the largest technology companies in the world. More and more businesses are looking towards Linux based solutions to meet the demand for lower-cost computing.

The championing of Linux as a business platform by IBM has helped to bring Linux into mainstream datacenters and IBM's zEnterprise System platform is particularly well suited for running Linux workloads. But while the benefits of Linux deployment are well understood, the challenge for mainframe professionals remain; how can tried and trusted mainframe tools be used for managing new workloads on new platforms?

William Data Systems, leaders in System z network management tools have the answer to this conundrum. ZEN LINUX MONITOR (ZLM) has been specifically designed to meet the challenge of monitoring the performance and availability of all instances of Linux, whether running under z/VM, natively in an IFL, or even workloads running Linux on Intel-based PC servers.

ZEN LINUX MONITOR

The ZEN LINUX MONITOR (ZLM) is an effective solution for monitoring the performance and availability of all your Linux systems, enabling technicians to ensure workloads are running efficiently and immediately pinpoint issues if they're not.

As a component of ZEN, ZLM utilizes the elegance and simplicity of ZEN's two-tier browser interface. A small Linux 'agent' installed on each of the systems you need to monitor sends comprehensive performance and availability data back to ZEN on z/OS, which makes it possible to monitor, alert and report on all aspects of z/OS and Linux system activity from any ZEN web browser user-interface.

ZEN LINUX MONITOR provides a summary of all monitored Linux systems along with key performance indicators for active systems. Additional displays show detailed metrics about CPU utilization, memory, busiest users (processes), network resources and traffic activity, all of which can be threshold monitored and alerted upon using ZEN's comprehensive alerting facilities.

ZEN LINUX MONITOR

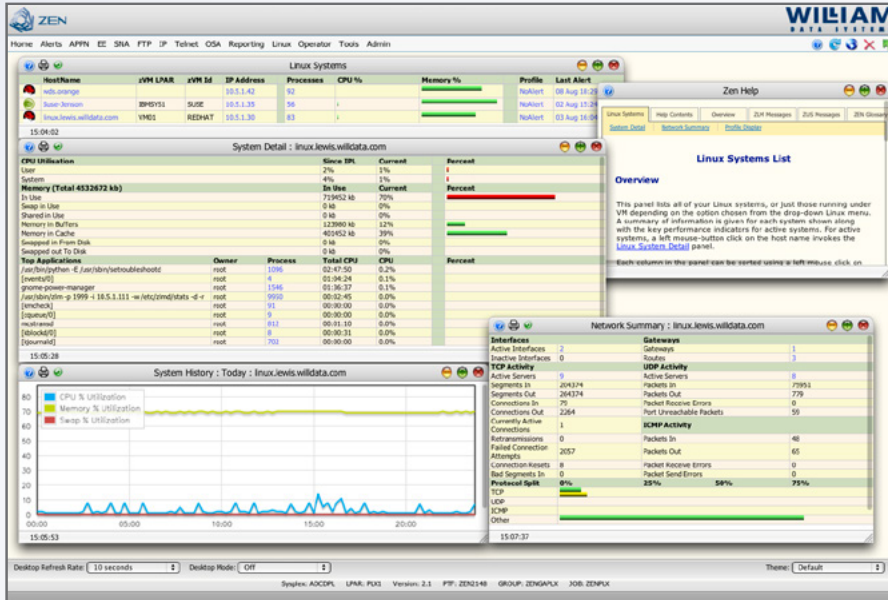
The ZEN LINUX MONITOR provides a comprehensive set of display panels that provide a view of performance data from the high-level Unix Systems Summary, Linux Systems List and Network Summary through to more detailed panels such as the Linux System Detail and Linux Process List right down to the full details for an individual process.

There are several panels designed to provide a deeper insight into the networking side of your Linux systems, for example:

- Active TCP Servers and UDP Servers
- Interfaces
- Gateways
- Routes
- Active connections on selected TCP server ports

In addition to the many statistical panels, graphical panels are also provided for both System History and Network History data.

Threshold monitoring can be set for several performance metrics.



SUPPORT

As confirmed through an independent survey of William Data Systems customers, we have built an exceptional reputation for outstanding customer support. We provide comprehensive, effective and highly responsive support for WDS products at all stages of their lifecycle.

In addition, a wide range of Professional Services and training programs are available dependent on user demand. These can be held at WDS offices, customer sites or managed remotely via web conferencing.

ZEN LINUX MONITOR

Centralized resource monitoring
for all your Linux systems



William Data Systems (WDS) is a pioneer of specialized z/OS network management solutions. Established in 1993, we are an independent global organization that provides innovative solutions to run mainframe networks efficiently and securely. ZEN, the WDS network management suite, offers a selection of user-friendly and cost-effective solutions to meet your unique needs. To overcome both business and technology challenges, WDS provides customers with licensing and pricing terms that are as flexible as our solutions.

WDS supports customers worldwide in sectors such as finance, banking and manufacturing, and our client list includes Fortune 100 companies and government agencies. WDS is an IBM Business Partner and a member of the IBM PartnerWorld for Developers program. We are committed to the global z/OS networking market and to leading the way with innovative solutions through the latest advances.



To learn more about
WDS ZEN solutions,
for support or to contact
our offices, visit
www.willdata.com

IBM logo, the Business Partner emblem, z/OS, VTAM and SNA are trademarks of International Business Machines Corporation. ZEN, the ZEN logo, ZEN IP MONITOR - IMPLEX (ZIM), ZEN EE MONITOR - FERRET (ZEM), ZEN OSA MONITOR (ZOM), ZEN LINUX MONITOR (ZLM), ZEN TRACE & SOLVE - EXIGENCE (ZTS), ZEN FTP CONTROL - FTPALERT (ZFC), ZEN EE SECURITY - APIAS (ZES) and ZEN APPLICATION GATEWAY (ZAG) are trademarks of William Data Systems Ltd. All other brand and product names are trademarks or service marks of their respective holders.

Copyright © 1999-2012 William Data Systems Ltd.
All rights reserved.

